

*Fine Love Dolls*

WWW.FINELOVEDOLLS.COM

# USER MANUAL



# SUMMARY



*Fine Love Dolls*

INCLUDED WITH YOUR DOLL	-----	P.3
TPE DOLL ASSEMBLY	-----	P.4
TPE DOLL SKELETON	-----	P.5
TPE DOLLS CARE & CLEANING	-----	P.6
MAINTENANCE & STORAGE	-----	P.7
UPGRADES & BEAUTY TIPS	-----	P.8
TPE DOLLS MAKEUP	-----	P.9
QUALITY GUARANTEE	-----	P.10
CONTACT US	-----	P.11

# INCLUDED WITH YOUR DOLL

The following items are included with your doll:

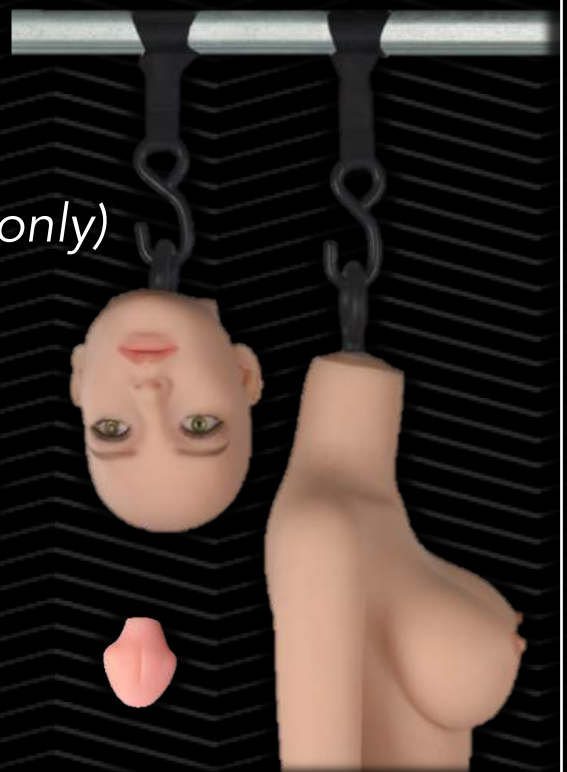
- ♥ USB vaginal rod heater x1
- ♥ Random outfit x1
- ♥ Blanket x1
- ♥ Pair of latex gloves x1
- ♥ Disposal cleaning douche x1
- ♥ Condom x1



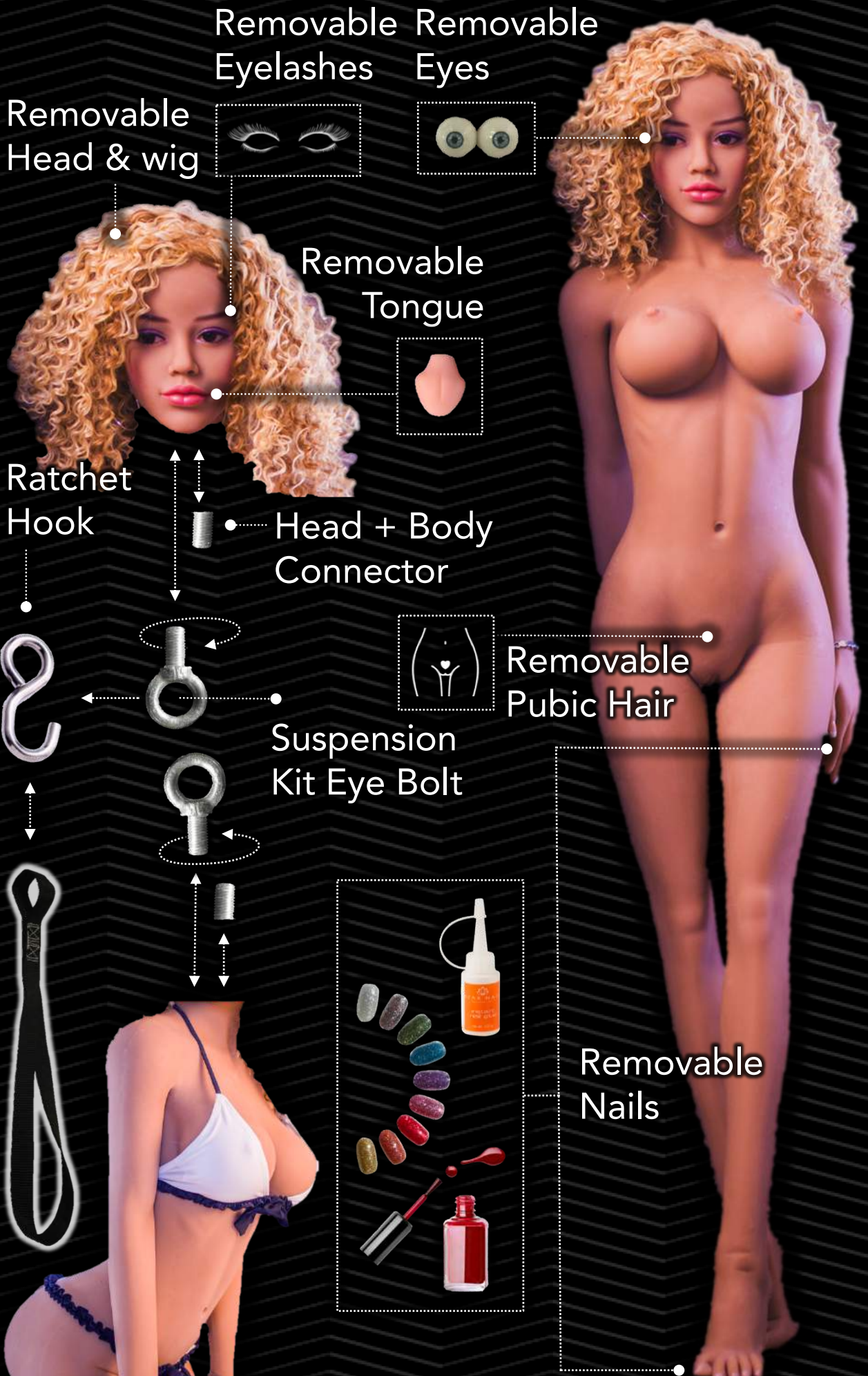
## *Fine Love Dolls*

The following items are offered with your doll:

- ♥ Extra pair of eyes x1
- ♥ Extra wig x1
- ♥ Storage suspension kit x1  
*(WM, YL & OR Doll bodies only)*



# TPE DOLL ASSEMBLY

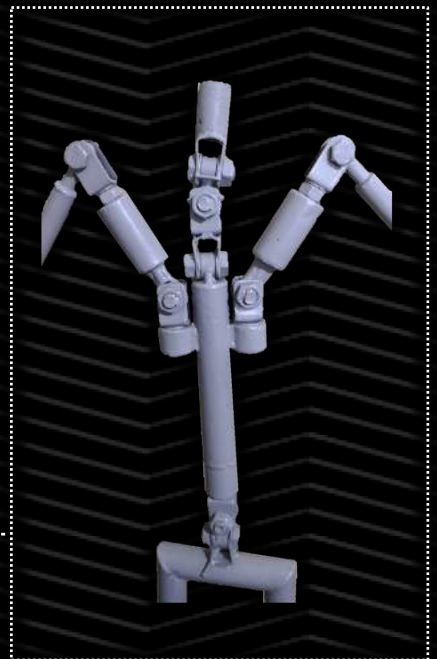
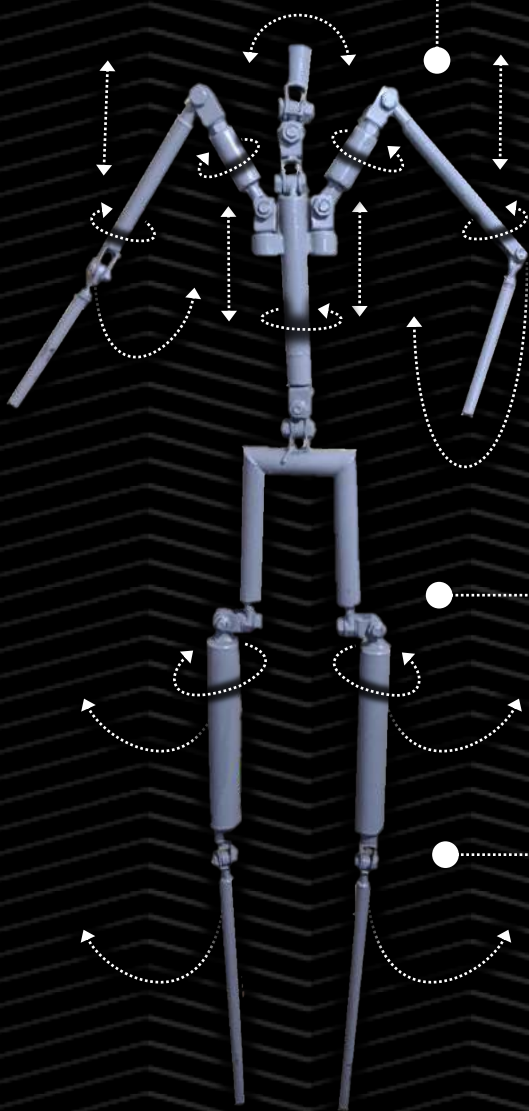


*Fine Love Dolls*

# DOLL SKELETON

We use the latest generation skeletons for our TPE dolls. Our skeletons have body joints made of multiplex metal, to guarantee any sorts of poses.

Hands as well as fingers are all articulated also.



Feet are also articulated, and can move up and down.

*Fine Love Dolls*

# DOLL CARE & CLEANING

TPE dolls are waterproof, more exactly water resistant as TPE is a porous material.



CAUTION: AVOID KEEPING YOUR DOLL HEAD UNDER SUBMERGED FOR TOO LONG. MAKE SURE THE WATER TEMPERATURE IS BELOW 50°C (122 °F).

1.

Use an antimicrobial soap to clean your doll. For the cavities, use the disposable cleaning douche provided



2.

Once your doll is clean and fully dry, apply hydrating body lotion onto her skin. Whip off the excess with a towel



3.

Once your doll is fully hydrated, apply baby powder onto her body to maintain her skin soft & smooth



*Fine Love Dolls*

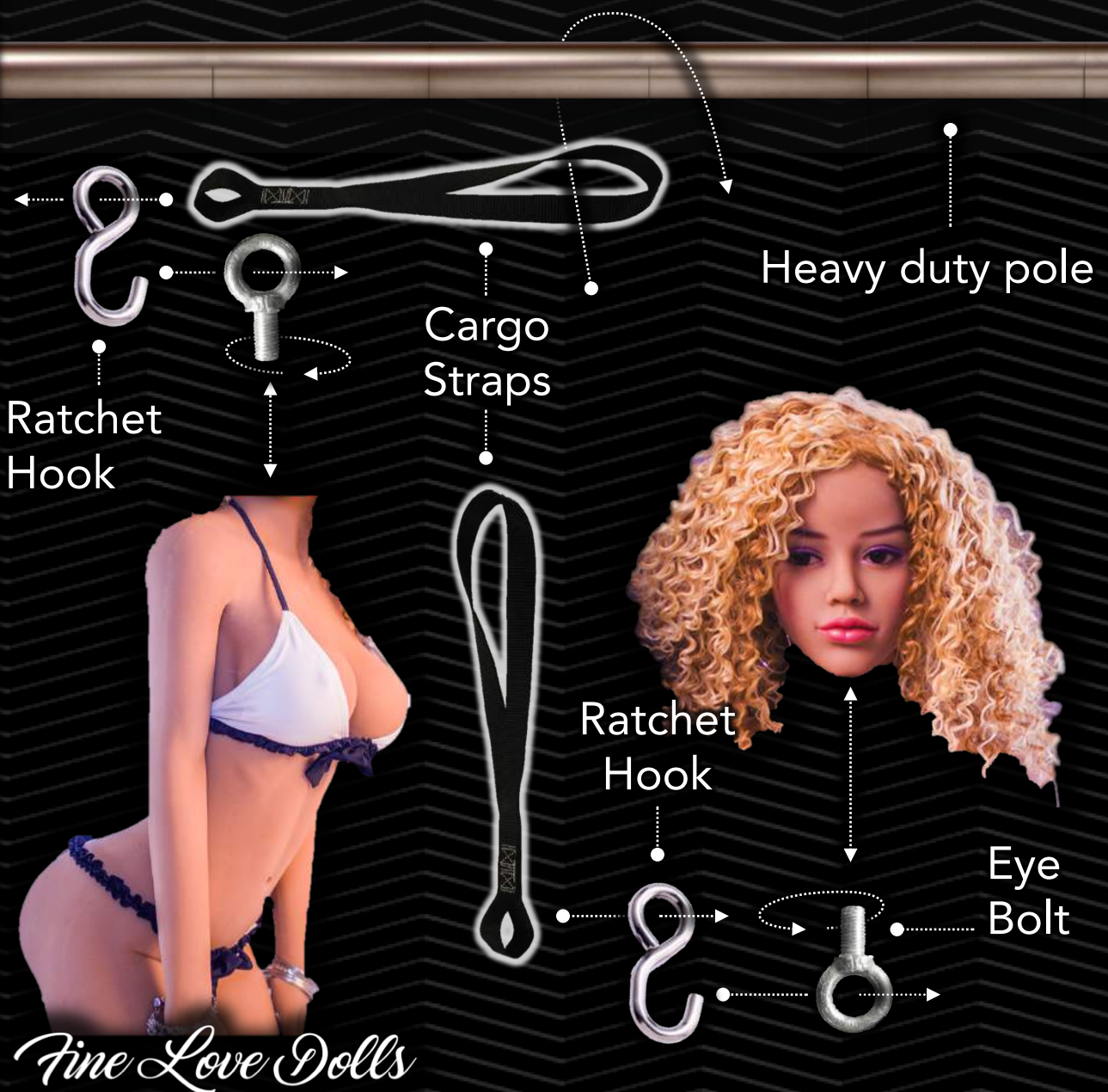
*\*Above brands are only examples*

# MAINTENANCE & STORAGE

- ♥ Keep your doll stored unclothed and protected from dust, at ambient temperature in a dry room.
- ♥ Do not keep your doll dressed for extended periods of time, as some clothes can stain her skin.
- ♥ Do not leave your doll lying on her stomach for too long, as this could flatten her breasts over time.

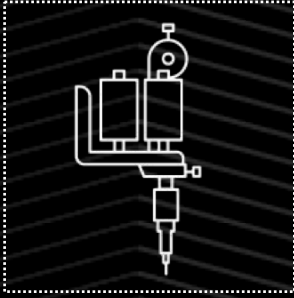


CAUTION: AVOID STORING YOUR DOLL AGAINST HARD SURFACES THAT COULD FLATTEN HER SKIN. DO NOT PUT PRESSURE ON ARTICULATIONS.



# UPGRADES & BEAUTY TIPS

## TATTOOS



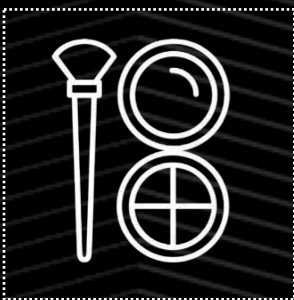
You can use temporary tattoos such as decalcomanias on your doll. Tattoo sleeves are also an option. If you are looking for permanent tattoos, you will need an ink that is specific to TPE.

## PIERCINGS



TPE is an elastic material and you can pierce your doll anywhere very easily! From her nose to her ears, belly button, nipple, clitoris, etc....

## MAKEUP



Your doll is delivered with a basic makeup on which you can enhance according to your desire! Any regular makeup works perfectly fine and will hold well on your doll skin.

## LINGERIE & CLOTHINGS



Most of fabrics are fine but avoid poor quality denim and dyed clothing which could stain your doll skin. Checkout our bra size calculator on our shop, to find the right lingerie size for your doll.

& MORE TIPS  
ON OUR SHOP

*Fine Love Dolls*

# TPE DOLLS MAKEUP



Even if it last longer on your doll than on a real woman, no makeup is eternal, and you will have to redo it once in a while, but don't worry if a 12 years old girl is able to do it on YouTube, so can you! The below items are needed if you wish to enhance your doll's beauty and can be found anywhere:

## WHAT YOU WILL NEED

FOUNDATION



EYELINER



LIPSTICK



BRUSH



EYE SHADOW



EYELASH GLUE



EYELASHES



*\*Above brands are only examples*

For video tutorials on how to apply makeup or new eyelashes to your doll, please visit to our shop!

& MORE TIPS  
ON OUR SHOP

*Fine Love Dolls*

# QUALITY GUARANTEE

Our TPE sex dolls are made of Thermoplastic Elastomer (TPE) material. TPE is a silicone derivative, which can be stretched up to 5.5 times length, has a more attractive price than silicone and mimics the experience of human skin with both a soft and stretchy effect.

Our TPE dolls are waterproof, hypoallergenic and phthalate free. The skin has pure natural luster and smooth feelings by touch.

Each product is carefully inspected and compliant to all E.U & U.S hygiene and quality standards.



**CAUTION:** Thermoplastic Elastomer (TPE) is a porous material, and cannot therefore be fully sterilized.

To prevent risks of bacteria proliferation & STD development, always clean your doll after use.

Wearing a condom is recommended during the intercourse with your doll.

Do not share your doll with others or use 2<sup>nd</sup> hand dolls.

*Fine Love Dolls*

# CONTACT US



## BROWSE OUR LATEST DOLLS ON OUR SHOP!

[WWW.FINELOVEDOLLS.COM](http://WWW.FINELOVEDOLLS.COM)

GO



# Fine Love Dolls



FINELOVEDOLLS



FINELOVEDOLLSWORLDWIDE